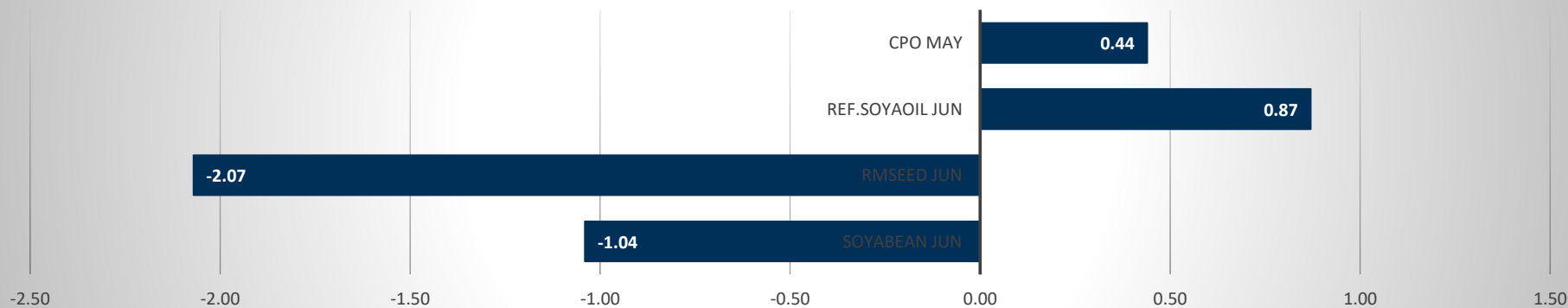


Commodity	Open	High	Low	Close	Rs.Chg	% Chg	Spot	Vol	OI	OI Chg	OI STATUS
Soyabean Jun	7349.00	7400.00	7250.00	7316.00	-77.00	-1.04	7777.00	30790	54865	6.89	Fresh Selling
Rmseed Jun	7440.00	7490.00	7315.00	7345.00	-155.00	-2.07	7325.00	41620	68010	-1.69	Long Liquidation
Ref.Soyaoil Jun	1438.00	1457.50	1435.80	1454.20	12.50	0.87	1496.00	35875	34200	18.54	Fresh Buying
Cpo May	1243.80	1253.40	1240.00	1248.50	5.50	0.44	1272.80	1530	4420	0.52	Fresh Buying

Commodity	Daily Levels								Trend	Performance			
	Close	Res - 3	Res - 2	Res - 1	Pivot	Sup - 1	Sup - 2	Sup - 3		1 Week	1 Month	3 Month	1 Year
Soyabean Jun	7316.00	7544.0	7472.0	7394.0	7322.0	7244.0	7172.0	7094.0	Negative	-3.47	8.15	34.60	48.33
Rmseed Jun	7345.00	7626.0	7558.0	7451.0	7383.0	7276.0	7208.0	7101.0	Negative	1.99	12.19	28.37	42.98
Ref.Soyaoil Jun	1454.20	1483.0	1470.0	1462.0	1449.0	1441.0	1428.0	1420.0	Positive	0.73	8.75	23.07	47.46
Cpo May	1248.50	1268.0	1260.7	1254.6	1247.3	1241.2	1233.9	1227.8	Positive	2.71	8.56	18.93	51.73

## Price Movement

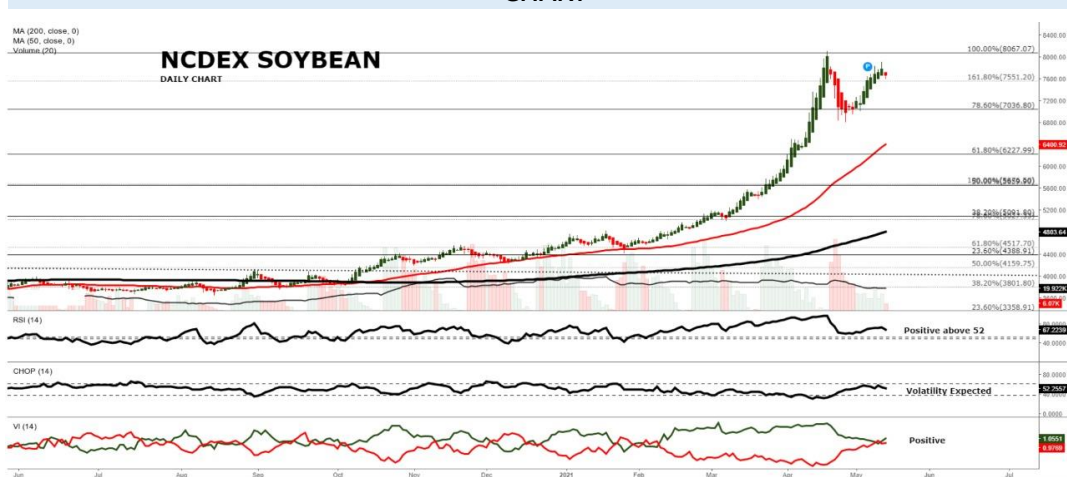


## DAILY SOYABEAN SYPNOSIS

Expiry	Open	High	Low	Close	Rs.Chg	% Chg	Spot	Vol	OI	OI Chg	Fut-Spot	OI STATUS
18 JUN 2021	7349.00	7400.00	7250.00	7316.00	-77.00	-1.04	7777.00	30790	54865	6.89	-461.00	Fresh Selling
20 JUL 2021	7001.00	7055.00	6924.00	6965.00	-123.00	-1.74	7777.00	5150	11100	19.68	-812.00	Fresh Selling
20 AUG 2021	6599.00	6705.00	6599.00	6697.00	-163.00	-2.38	7777.00	105	305	38.64	-1080.00	Fresh Selling

- Soyabean trading range for the day is 7172-7472.
- Soyabean dropped on profit booking after Global oilseed production is forecast to grow 5 percent in 2021/22
- Soybean production is forecast to rise 23 million tons to 386 million, a 6-percent increase.
- Madhya Pradesh, which had imposed restrictions on the sale of soyabean seeds, has revoked its order following protests by the Maharashtra government.
- At the Indore spot market in top producer MP, soybean dropped -98 Rupees to 7777 Rupees per 100 kgs.

### CHART



### TECHNICALS

#### Simple Moving Average

5 Days	10 Days	20 Days	50 Days	100 Days	200 Days
7504	7402	7304	6345	5501	4791
SELL	SELL	BUY	BUY	BUY	BUY

#### Exponential Moving Average

5 Days	10 Days	20 Days	50 Days	100 Days	200 Days
7421	7383	7186	6516	5819	5143
SELL	SELL	BUY	BUY	BUY	BUY

#### Spread

Month	Rate	JUN	JUL	AUG
JUN	7316		-351	-619
JUL	6965			-268
AUG	6697			

## DAILY RMSEED SYPNOSIS

Expiry	Open	High	Low	Close	Rs.Chg	% Chg	Spot	Vol	OI	OI Chg	Fut-Spot	OI STATUS
15 JUN 2021	7440.00	7490.00	7315.00	7345.00	-155.00	-2.07	7325.00	41620	68010	-1.69	20.00	Long Liquidation
20 JUL 2021	7396.00	7478.00	7303.00	7335.00	-164.00	-2.19	7325.00	5470	10620	5.88	10.00	Fresh Selling
20 AUG 2021	7450.00	7450.00	7330.00	7337.00	-186.00	-2.47	7325.00	2580	5480	0.18	12.00	Fresh Selling

- Rmseed trading range for the day is 7208-7558.
- Mustard seed prices dropped on profit booking after U.S. rapeseed production is forecast to reach a record 1.8 million tons on record area and trend yield.
- Pressure also seen as Canada rapeseed production is projected at 20.5 million tons, up 1.5 million on greater area.
- European Union rapeseed production is projected to show a modest gain in 2021/22 on increased planted area and improved yield
- In Alwar spot market in Rajasthan the prices gained 105 Rupees to end at 7325 Rupees per 100 kg.

## CHART



## TECHNICALS

### Simple Moving Average

	5 Days	10 Days	20 Days	50 Days	100 Days	200 Days
Price	7434	7226	7126	6323	6001	5778
Signal	SELL	BUY	BUY	BUY	BUY	BUY

### Exponential Moving Average

	5 Days	10 Days	20 Days	50 Days	100 Days	200 Days
Price	7380	7273	7045	6549	6181	5774
Signal	SELL	BUY	BUY	BUY	BUY	BUY

### Spread

Month	Rate	JUN	JUL	AUG
JUN	7345		-10	-8
JUL	7335			2
AUG	7337			

## DAILY SOYOIL SYNOPSIS

Expiry	Open	High	Low	Close	Rs.Chg	% Chg	Spot	Vol	OI	OI Chg	Fut-Spot	OI STATUS
15 JUN 2021	1438.00	1457.50	1435.80	1454.20	12.50	0.87	1496.00	35875	34200	18.54	-41.80	Fresh Buying
20 JUL 2021	1409.50	1427.30	1406.00	1423.10	13.30	0.94	1496.00	1120	5730	5.52	-72.90	Fresh Buying
20 AUG 2021	0.00	0.00	0.00	0.00	0.00	0.00	1496.00	0	0	0.00	-1496.00	Long Liquidation

- Ref.Soya oil trading range for the day is 1428-1470.
- Ref soyoil gained as concerns over tight global supplies underpinned the market.
- Support also seen as vegetable oils import, including both edible and non-edible oils, increased 32 per cent during April this year.
- According to SEA, 1.05 million tonnes (mt) of vegetable oils were imported in April 2021 compared with 798,715 tonnes in the same period a year ago.
- At the Indore spot market in Madhya Pradesh, soyoil was steady at 1496 Rupees per 10 kgs.

### CHART



### TECHNICALS

#### Simple Moving Average

5 Days	10 Days	20 Days	50 Days	100 Days	200 Days
1449.6	1438.7	1417.5	1338.8	1240.2	1099.5
BUY	BUY	BUY	BUY	BUY	BUY

#### Exponential Moving Average

5 Days	10 Days	20 Days	50 Days	100 Days	200 Days
1446.8	1436.6	1412.5	1343.3	1256.5	1140.4
BUY	BUY	BUY	BUY	BUY	BUY

#### Spread

Month	Rate	JUN	JUL	AUG
JUN	1454.2		-31.1	-1454.2
JUL	1423.1			-1423.1
AUG	0.0			

## DAILY CRUDE PALM OIL SYPNOSIS

Expiry	Open	High	Low	Close	Rs.Chg	% Chg	Spot	Vol	OI	OI Chg	Fut-Spot	OI STATUS
15 JUN 2021	1243.80	1253.40	1240.00	1248.50	5.50	0.44	1272.80	1530	4420	0.52	-24.30	Fresh Buying
30 JUN 2021	1222.00	1230.50	1220.00	1227.70	4.50	0.37	1272.80	875	3127	10.42	-45.10	Fresh Buying
30 JUL 2021	1199.00	1202.80	1193.40	1197.80	-1.10	-0.09	1272.80	61	134	57.65	-75.00	Fresh Selling

- CPO trading range for the day is 1233.9-1260.7.
- Crude palm oil gained as tightening edible oil supplies across the world underpinned prices.
- Malaysia's palm oil stocks at the end of April rose 7.1% from the previous month to 1.55 million tonnes
- Crude palm oil production jumped 7% from March to 1.52 million tonnes
- In spot market, Crude palm oil gained by 21 Rupees to end at 1272.8 Rupees.

### CHART



### TECHNICALS

#### Simple Moving Average

5 Days	10 Days	20 Days	50 Days	100 Days	200 Days
1242.8	1223.7	1217.7	1164.3	1078.2	950.1
BUY	BUY	BUY	BUY	BUY	BUY

#### Exponential Moving Average

5 Days	10 Days	20 Days	50 Days	100 Days	200 Days
1240.7	1230.7	1213.0	1162.4	1089.6	983.9
BUY	BUY	BUY	BUY	BUY	BUY

#### Spread

Month	Rate	MAY	JUN	JUL
MAY	1248.5		-20.8	-50.7
JUN	1227.7			-29.9
JUL	1197.8			

## SOYABEAN PRICE MOVEMENT SINCE 2011

Year						Sowing	Growth	Harvesting					Crop Calendar
	JAN	FEB	MAR	APR	MAY	JUN	JUL	AUG	SEP	OCT	NOV	DEC	
2011	2474.50	2408.00	2338.50	2415.50	2372.00	2294.00	2445.50	2410.50	2090.00	2178.50	2243.50	2514.00	140.00
	4.23	-2.69	-2.89	3.29	-1.80	-3.29	6.60	-1.43	-13.30	4.23	2.98	12.06	5.90
2012	2451.50	2668.50	3085.50	3625.00	3404.00	3968.50	4370.50	3947.50	3201.50	3298.00	3209.50	3203.00	689.00
	-2.49	8.85	15.63	17.49	-6.10	16.58	10.13	-9.68	-18.90	3.01	-2.68	-0.20	27.41
2013	3287.50	3324.50	3641.00	3932.00	3810.00	3670.50	2973.00	3470.00	3531.00	3925.00	3860.00	3819.00	616.00
	2.64	1.13	9.52	7.99	-3.10	-3.66	-19.00	16.72	1.76	11.16	-1.66	-1.06	19.23
2014	3926.50	4165.00	4311.50	4777.50	4592.00	4094.00	3639.00	3358.00	2963.00	3289.00	3300.00	3366.00	-453.00
	2.81	6.07	3.52	10.81	-3.88	-10.84	-11.11	-7.72	-11.76	11.00	0.33	2.00	-11.86
2015	3434.00	3406.00	3458.00	4025.00	3890.00	3329.00	3160.00	3218.00	3429.00	3909.00	3907.00	3880.00	514.00
	2.02	-0.82	1.53	16.40	-3.35	-14.42	-5.08	1.84	6.56	14.00	-0.05	-0.69	15.27
2016	3726.00	3664.00	4010.00	3927.00	3835.00	3740.00	3557.00	3257.00	3235.00	3114.00	3116.00	3029.00	-851.00
	-3.97	-1.66	9.44	-2.07	-2.34	-2.48	-4.89	-8.43	-0.68	-3.74	0.06	-2.79	-21.93
2017	3092.00	3007.00	2941.00	3002.00	2762.00	2925.00	3154.00	3097.00	3033.00	2823.00	3098.00	3118.00	89.00
	2.08	-2.75	-2.19	2.07	-7.99	5.90	7.83	-1.81	-2.07	-6.92	9.74	0.65	2.94
2018	3685.00	3802.00	3756.00	3669.00	3549.00	3566.00	3392.00	3222.00	3233.00	3269.00	3354.00	3399.00	281.00
	18.18	3.18	-1.21	-2.32	-3.27	0.48	-4.88	-5.01	0.34	1.11	2.60	1.34	9.01
2019	3826.00	3637.00	3681.00	3676.00	3718.00	3671.00	3582.00	3825.00	3939.00	3863.00	4072.00	4436.00	1037.00
	12.56	-4.94	1.21	-0.14	1.14	-1.26	-2.42	6.78	2.98	-1.93	5.41	8.94	30.51
2020	4084.00	3708.00	3796.00	3810.00	3830.00	3714.00	3780.00	4116.00	3866.00	4263.00	4415.00	4606.00	170.00
	-7.94	-9.21	2.37	0.37	0.52	-3.03	1.78	8.89	-6.07	10.27	3.57	4.33	3.83
2021	4644.00	5078.00	5993.00	7107.00									2501.00
	0.83	9.35	18.02	18.59									54.30
Average	1.48	0.61	4.39	6.05	-2.89	-1.85	-1.23	-0.14	-3.80	4.69	1.94	2.82	Average

## RMSEED PRICE MOVEMENT SINCE 2011

Year	Growth		Harvesting			Sowing							Crop Calendar
	JAN	FEB	MAR	APR	MAY	JUN	JUL	AUG	SEP	OCT	NOV	DEC	
2011	2993.00 0.70	2924.00 -2.31	2739.00 -6.33	2806.00 2.45	2944.00 4.92	2901.00 -1.46	3017.00 4.00	2997.00 -0.66	2858.00 -4.64	3104.00 8.61	3194.00 2.90	3311.00 3.66	318.00 10.62
2012	3346.00 1.06	3632.00 8.55	3925.00 8.07	4130.00 5.22	3901.00 -5.54	3990.00 2.28	4397.00 10.20	4452.00 1.25	3927.00 -11.79	4269.00 8.71	4214.00 -1.29	3544.00 -15.90	233.00 7.04
2013	3492.00 -1.47	3428.00 -1.83	3479.00 1.49	3505.00 0.75	3514.00 0.26	3451.00 -1.79	3182.00 -7.79	3571.00 12.23	3641.00 1.96	3878.00 6.51	3811.00 -1.73	3469.00 -8.97	-75.00 -2.12
2014	3353.00 -3.34	3537.00 5.49	3504.00 -0.93	3594.00 2.57	3456.00 -3.84	3595.00 4.02	3641.00 1.28	3592.00 -1.35	3693.00 2.81	3763.00 1.90	3885.00 3.24	3524.00 -9.29	55.00 1.59
2015	3378.00 -4.14	3406.00 0.83	3411.00 0.15	3869.00 13.43	4306.00 11.29	4255.00 -1.18	4232.00 -0.54	4317.00 2.01	4514.00 4.56	4923.00 9.06	4897.00 -0.53	4244.00 -13.33	720.00 20.43
2016	3877.00 -8.65	3929.00 1.34	4202.00 6.95	4472.00 6.43	4503.00 0.69	4848.00 7.66	4875.00 0.56	4681.00 -3.98	4642.00 -0.83	4498.00 -3.10	4876.00 8.40	3974.00 -18.50	604.00 14.23
2017	3834.00 -3.52	3848.00 0.37	3908.00 1.56	3759.00 -3.81	3483.00 -7.34	3609.00 3.62	3699.00 2.49	3771.00 1.95	3739.00 -0.85	3897.00 4.23	4104.00 5.31	3939.00 -4.02	-35.00 -0.88
2018	4187.00 6.30	4125.00 -1.48	4054.00 -1.72	3795.00 -6.39	3958.00 4.30	4027.00 1.74	4214.00 4.64	4070.00 -3.42	4241.00 4.20	4170.00 -1.67	3977.00 -4.63	3929.00 -1.21	-10.00 -0.25
2019	3983.00 1.37	3840.00 -3.59	3750.00 -2.34	3744.00 -0.16	3718.00 -0.69	3939.00 5.94	3950.00 0.28	3922.00 -0.71	3954.00 0.82	4306.00 8.90	4321.00 0.35	4658.00 7.80	729.00 18.55
2020	4109.00 -11.79	4000.00 -2.65	4118.00 2.95	4141.00 0.56	4490.00 8.43	4650.00 3.56	5014.00 7.83	5410.00 7.90	5468.00 1.07	6067.00 10.95	5871.00 -3.23	5817.00 -0.92	1159.00 24.88
2021	5604.00 -3.66	5536.00 -1.21	5682.00 2.64	6871.00 20.93									1054.00 18.12
Average	-2.47	0.32	1.13	3.81	1.25	2.44	2.29	1.52	-0.27	5.41	0.88	-6.07	Average

## SOYOIL PRICE MOVEMENT SINCE 2011

	JAN	FEB	MAR	APR	MAY	JUN	JUL	AUG	SEP	OCT	NOV	DEC	Growth
2011	658.60	628.40	599.65	626.50	660.95	634.50	661.85	660.75	614.10	618.20	634.65	733.50	100.95
	4.12	-4.59	-4.58	4.48	5.50	-4.00	4.31	-0.17	-7.06	0.67	2.66	15.58	15.33
2012	683.15	712.75	751.40	775.70	735.65	761.50	784.85	792.20	663.20	686.70	720.25	695.80	-37.70
	-6.86	4.33	5.42	3.23	-5.16	3.51	3.07	0.94	-16.28	3.54	4.89	-3.39	-5.52
2013	737.35	680.85	688.10	719.30	715.05	673.00	651.95	703.20	686.20	748.85	713.80	698.10	2.30
	5.97	-7.66	1.06	4.53	-0.59	-5.88	-3.13	7.86	-2.42	9.13	-4.68	-2.20	0.31
2014	683.55	716.65	705.45	718.50	676.60	693.45	676.60	610.65	614.00	599.85	576.80	638.05	-60.05
	-2.08	4.84	-1.56	1.85	-5.83	2.49	-2.43	-9.75	0.55	-2.30	-3.84	10.62	-8.79
2015	620.10	595.40	583.60	582.50	613.00	588.15	574.70	574.15	598.05	611.30	619.65	614.50	-23.55
	-2.81	-3.98	-1.98	-0.19	5.24	-4.05	-2.29	-0.10	4.16	2.22	1.37	-0.83	-3.80
2016	610.10	617.40	642.50	657.60	656.95	644.10	631.30	645.95	661.45	674.30	727.65	706.95	92.45
	-0.72	1.20	4.07	2.35	-0.10	-1.96	-1.99	2.32	2.40	1.94	7.91	-2.84	15.15
2017	686.10	664.35	623.10	610.85	622.80	641.90	657.35	664.05	664.70	686.10	746.45	727.50	20.55
	-2.95	-3.17	-6.21	-1.97	1.96	3.07	2.41	1.02	0.10	3.22	8.80	-2.54	3.00
2018	743.85	760.85	786.85	764.75	776.40	756.20	742.30	739.75	748.30	754.85	719.95	730.10	2.60
	2.25	2.29	3.42	-2.81	1.52	-2.60	-1.84	-0.34	1.16	0.88	-4.62	1.41	0.35
2019	775.80	756.85	728.75	740.05	755.30	745.10	733.90	755.05	764.50	773.65	814.40	933.20	203.10
	6.26	-2.44	-3.71	1.55	2.06	-1.35	-1.50	2.88	1.25	1.20	5.27	14.59	26.18
2020	851.20	767.60	828.00	787.20	785.20	799.10	864.70	892.90	904.10	963.40	1072.30	1190.10	256.90
	-8.79	-9.82	7.87	-4.93	-0.25	1.77	8.21	3.26	1.25	6.56	11.30	10.99	30.18
2021	1105.50	1192.40	1269.50	1360.70									170.60
	-7.11	7.86	6.47	7.18									15.43
Average	-1.16	-1.01	0.93	1.39	0.43	-0.90	0.48	0.79	-1.49	2.70	2.90	4.14	Average



## CPO PRICE MOVEMENT SINCE 2011

	JAN	FEB	MAR	APR	MAY	JUN	JUL	AUG	SEP	OCT	NOV	DEC	Growth
2011	559.50 2.70	539.80 -3.52	510.70 -5.39	521.20 2.06	535.80 2.80	478.40 -10.71	487.40 1.88	490.20 0.57	480.80 -1.92	475.70 -1.06	508.90 6.98	545.40 7.17	0.60 0.11
2012	514.20 -5.72	536.20 4.28	592.30 10.46	621.50 4.93	585.90 -5.73	566.40 -3.33	564.40 -0.35	551.60 -2.27	446.20 -19.11	425.20 -4.71	423.20 -0.47	417.90 -1.25	-127.50 -23.38
2013	438.20 4.86	450.80 2.88	454.90 0.91	464.90 2.20	480.50 3.36	502.20 4.52	496.60 -1.12	568.70 14.52	532.40 -6.38	557.20 4.66	558.30 0.20	540.20 -3.24	122.30 29.27
2014	524.00 -3.00	590.00 12.60	569.70 -3.44	567.70 -0.35	524.90 -7.54	535.00 1.92	539.10 0.77	439.60 -18.46	474.50 7.94	457.20 -3.65	439.50 -3.87	460.60 4.80	-79.60 -14.74
2015	425.00 -7.73	466.10 9.67	434.40 -6.80	435.40 0.23	456.80 4.92	451.40 -1.18	417.60 -7.49	360.50 -13.67	425.70 18.09	400.80 -5.85	382.40 -4.59	411.00 7.48	-49.60 -10.77
2016	432.50 5.23	481.90 11.42	532.20 10.44	564.00 5.98	537.00 -4.79	506.80 -5.62	524.70 3.53	559.10 6.56	581.60 4.02	514.90 -11.47	554.70 7.73	582.70 5.05	171.70 41.78
2017	587.50 0.82	544.90 -7.25	538.80 -1.12	516.80 -4.08	512.70 -0.79	490.80 -4.27	488.70 -0.43	518.20 6.04	547.80 5.71	545.30 -0.46	589.60 8.12	554.60 -5.94	-28.10 -4.82
2018	560.60 1.08	587.50 4.80	651.80 10.94	642.60 -1.41	653.10 1.63	643.40 -1.49	616.80 -4.13	599.50 -2.80	594.00 -0.92	593.50 -0.08	500.70 -15.64	511.60 2.18	-43.00 -7.75
2019	569.40 11.30	550.10 -3.39	525.90 -4.40	529.70 0.72	519.30 -1.96	515.80 -0.67	513.60 -0.43	522.20 1.67	546.60 4.67	587.90 7.56	680.00 15.67	795.20 16.94	283.60 55.43
2020	771.80 -2.94	648.60 -15.96	663.50 2.30	609.00 -8.21	658.20 8.08	646.20 -1.82	731.80 13.25	764.90 4.52	754.90 -1.31	817.50 8.29	883.70 8.10	977.80 10.65	182.60 22.96
2021	969.30 -0.87	1059.10 9.26	1076.30 1.62	1155.70 7.38									177.90 18.19
Average	0.52	2.25	1.41	0.86	0.00	-2.27	0.55	-0.33	1.08	-0.68	2.22	4.38	Average

The logo for KEDIA ADVISORY is displayed within a dark blue rectangular box. The word "KEDIA" is written in a bold, yellow, sans-serif font, and the word "ADVISORY" is written in a white, sans-serif font to its right.

KEDIA STOCKS & COMMODITIES RESEARCH PVT LTD.  
Mumbai. INDIA.

For more details, please contact:  
Mobile: +91 9323406035 / 9320096333 / 9619551022  
Email: [info@kediaadvisory.com](mailto:info@kediaadvisory.com)  
URL: [www.kediaadvisory.com](http://www.kediaadvisory.com)  
SEBI REGISTRATION NUMBER - INH000006156

General Disclaimers: This Report is prepared and distributed by Kedia Stocks & Commodities Research Pvt Ltd. for information purposes only. The recommendations, if any, made herein are expression of views and/or opinions and should not be deemed or construed to be neither advice for the purpose of purchase or sale through KSCRPL nor any solicitation or offering of any investment /trading opportunity. These information / opinions / views are not meant to serve as a professional investment guide for the readers. No action is solicited based upon the information provided herein. Recipients of this Report should rely on information/data arising out of their own investigations. Readers are advised to seek independent professional advice and arrive at an informed trading/investment decision before executing any trades or making any investments. This Report has been prepared on the basis of publicly available information, internally developed data and other sources believed by KSCRPL to be reliable. KSCRPL or its directors, employees, affiliates or representatives do not assume any responsibility for, or warrant the accuracy, completeness, adequacy and reliability of such information / opinions / views. While due care has been taken to ensure that the disclosures and opinions given are fair and reasonable, none of the directors, employees, affiliates or representatives of KSCRPL shall be liable for any direct, indirect, special, incidental, consequential, punitive or exemplary damages, including lost profits arising in any way whatsoever from the information / opinions / views contained in this Report. The possession, circulation and/or distribution of this Report may be restricted or regulated in certain jurisdictions by appropriate laws. No action has been or will be taken by KSCRPL in any jurisdiction (other than India), where any action for such purpose(s) is required. Accordingly, this Report shall not be possessed, circulated and/ or distributed in any such country or jurisdiction unless such action is in compliance with all applicable laws and regulations of such country or jurisdiction. KSCRPL requires such recipient to inform himself about and to observe any restrictions at his own expense, without any liability to KSCRPL. Any dispute arising out of this Report shall be subject to the exclusive jurisdiction of the Courts in India.